

British & Irish Railway Workplace Accidents, 1911-15

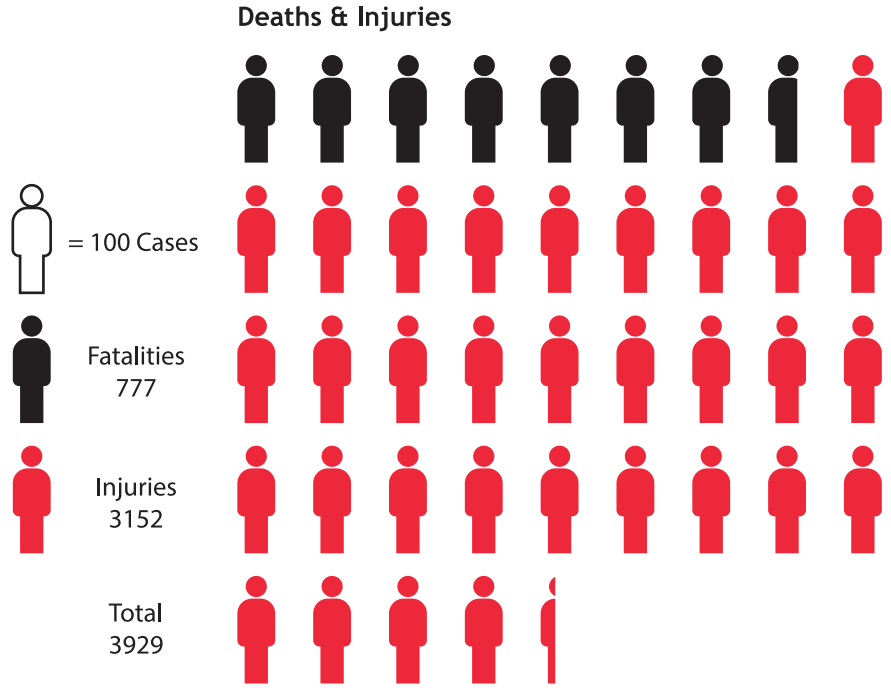
Data from the 'Railway Work, Life & Death' project

www.railwayaccidents.port.ac.uk

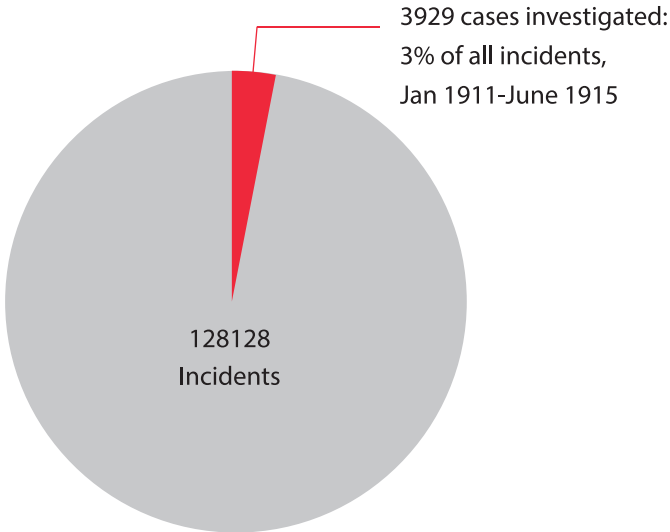
Twitter: @RWLDproject

Data from the 3% of railway worker accidents investigated by Board of Trade railway inspectors, Jan 1911–June 1915.

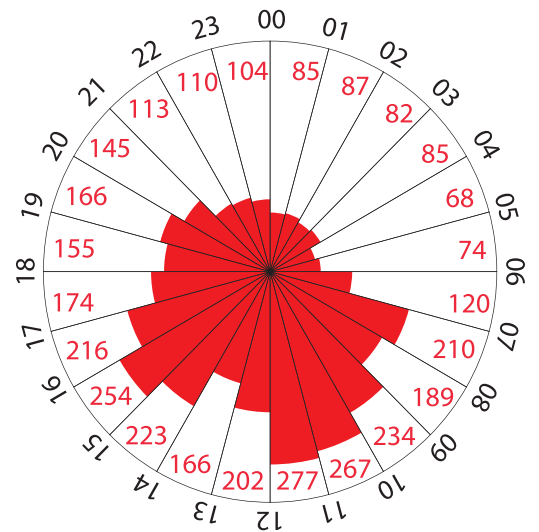
■ Deaths ■ Injuries



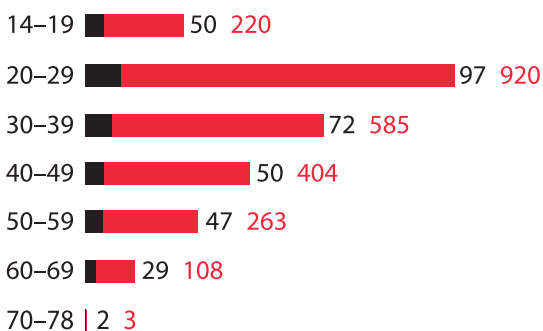
Railway Inspectorate Investigations



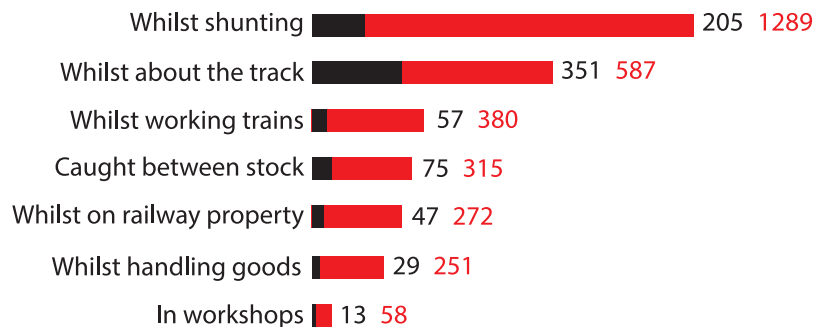
Casualties by Time of Day



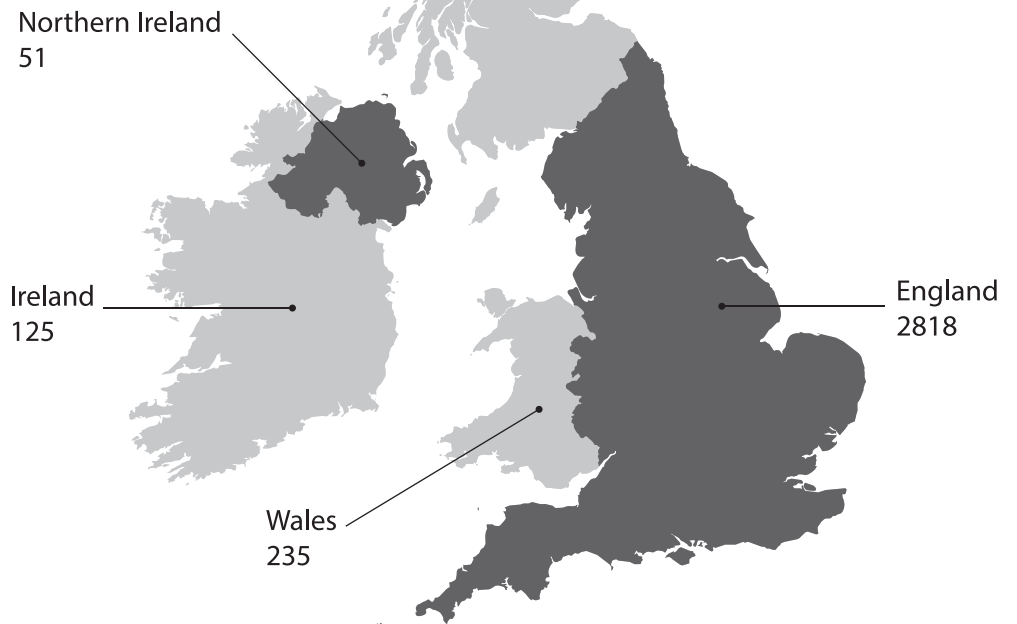
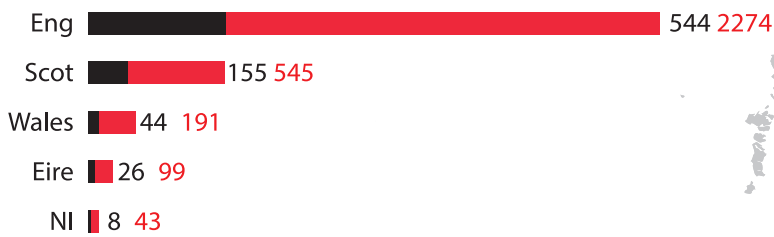
Age of Casualty



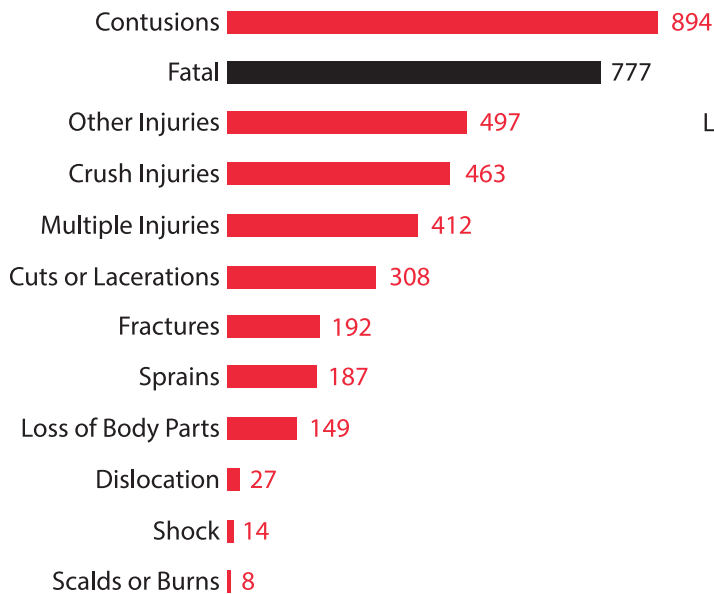
Location of Incidents



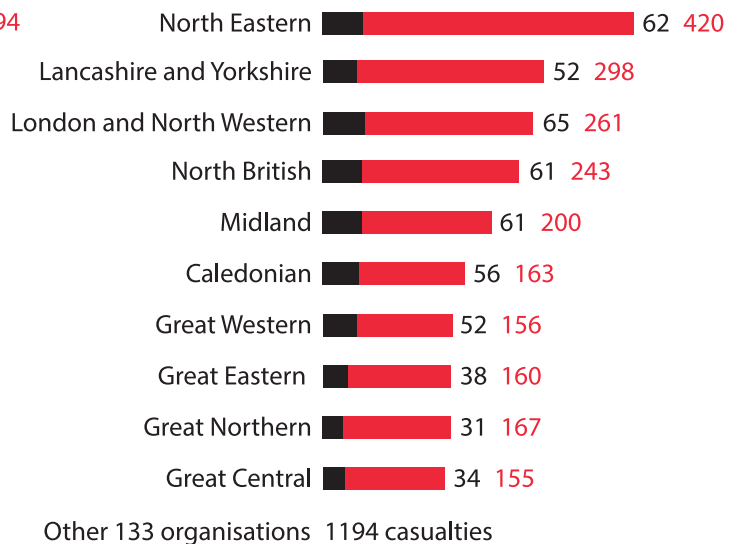
Casualties by Nation



Types of Injury



Company Records



Data from the 3% of railway worker accidents investigated by Board of Trade railway inspectors, Jan 1911–June 1915.

■ Deaths ■ Injuries